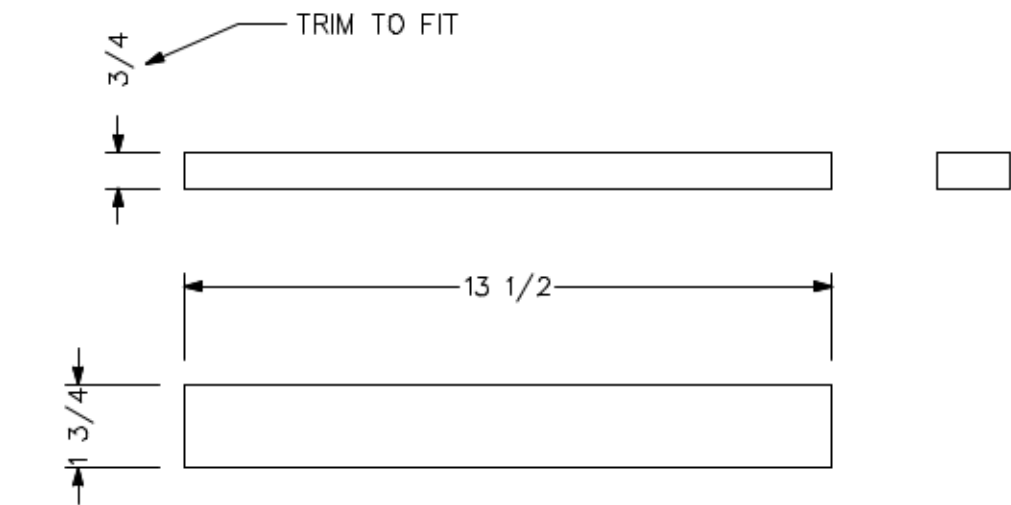


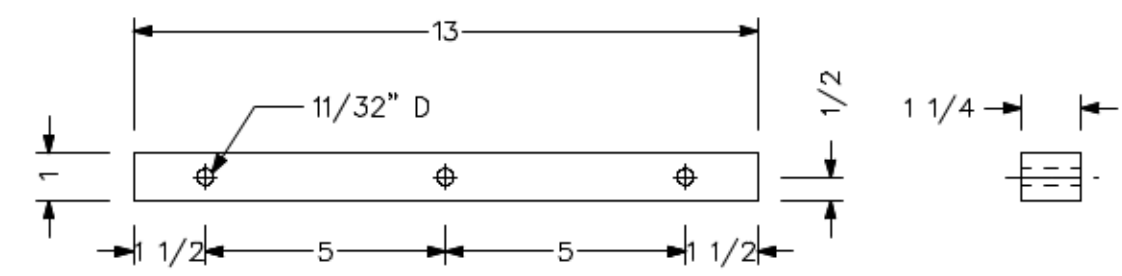
ANTI-ROTATION PLATE

PART # ODJ127-60-6
 QTY - 2
 MAT - 3/16" x 2" ALUMINUM



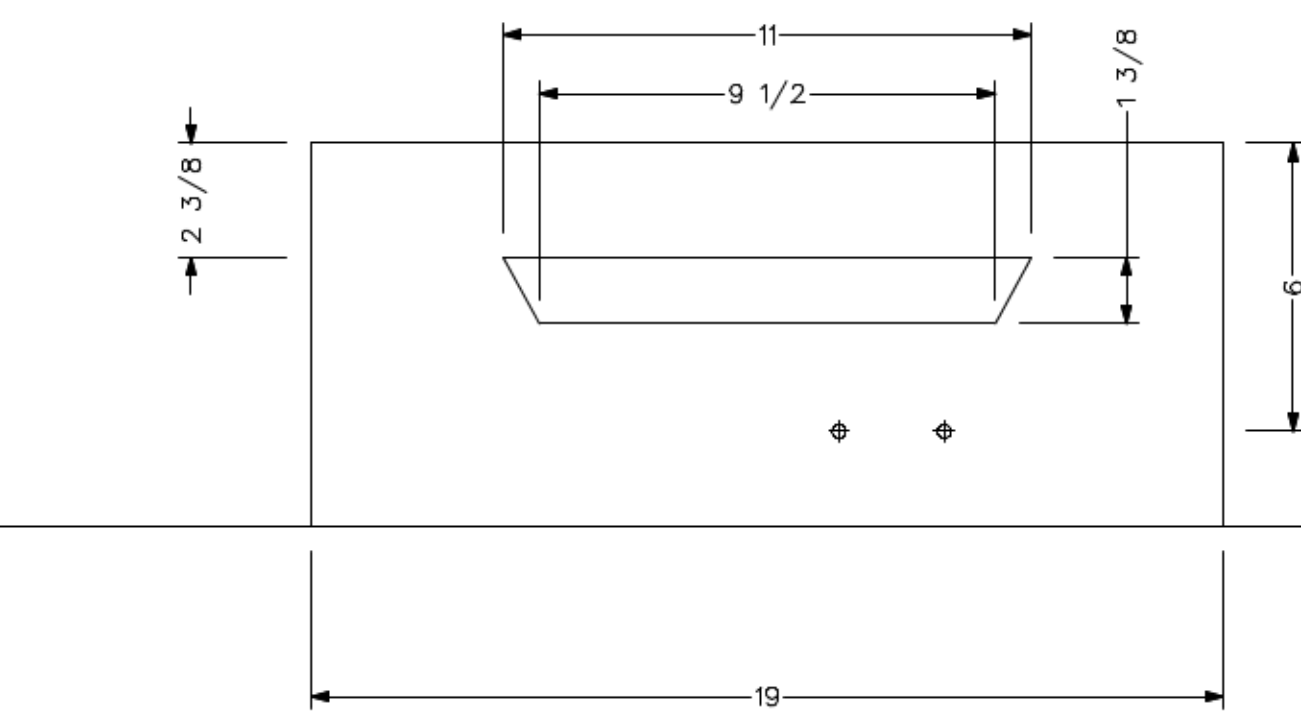
WOOD ANTI ROTATION STICK

PART # ODJ127-60-4
 QTY - 1
 MAT - 3/4" THICK WOOD

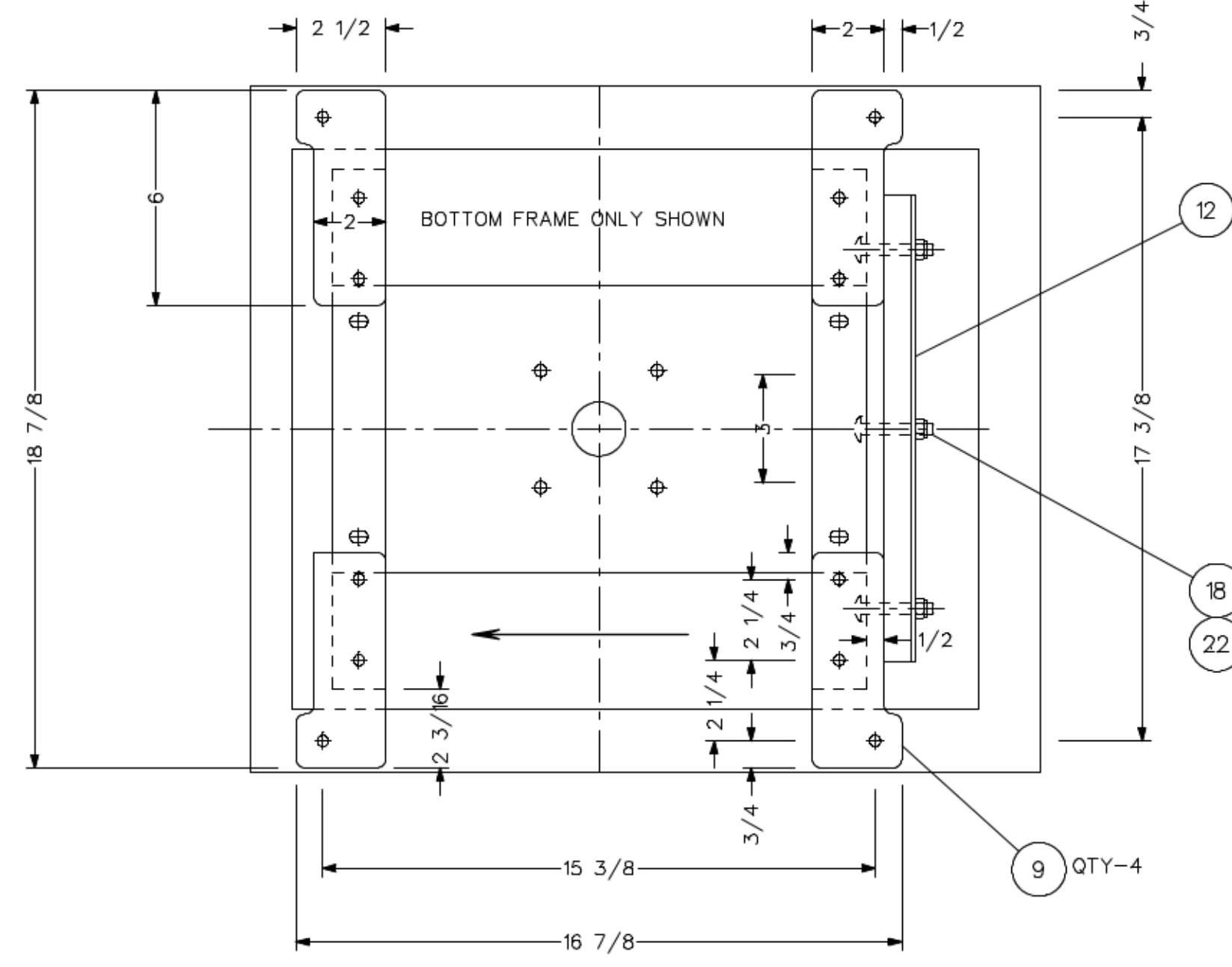


WOOD STOP BLOCK

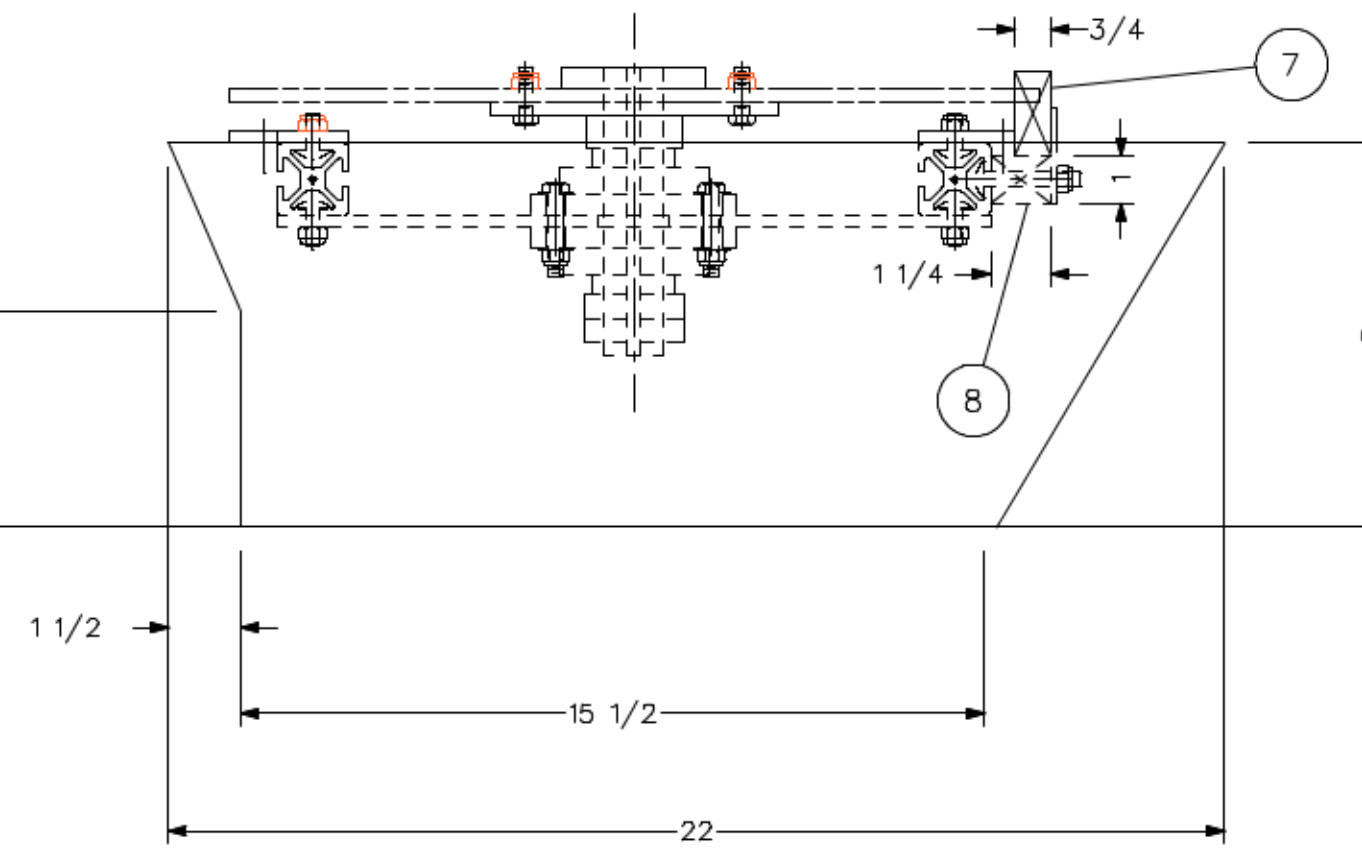
PART # ODJ127-60-5
 QTY - 1
 MAT - 3/4" WOOD



FRONT

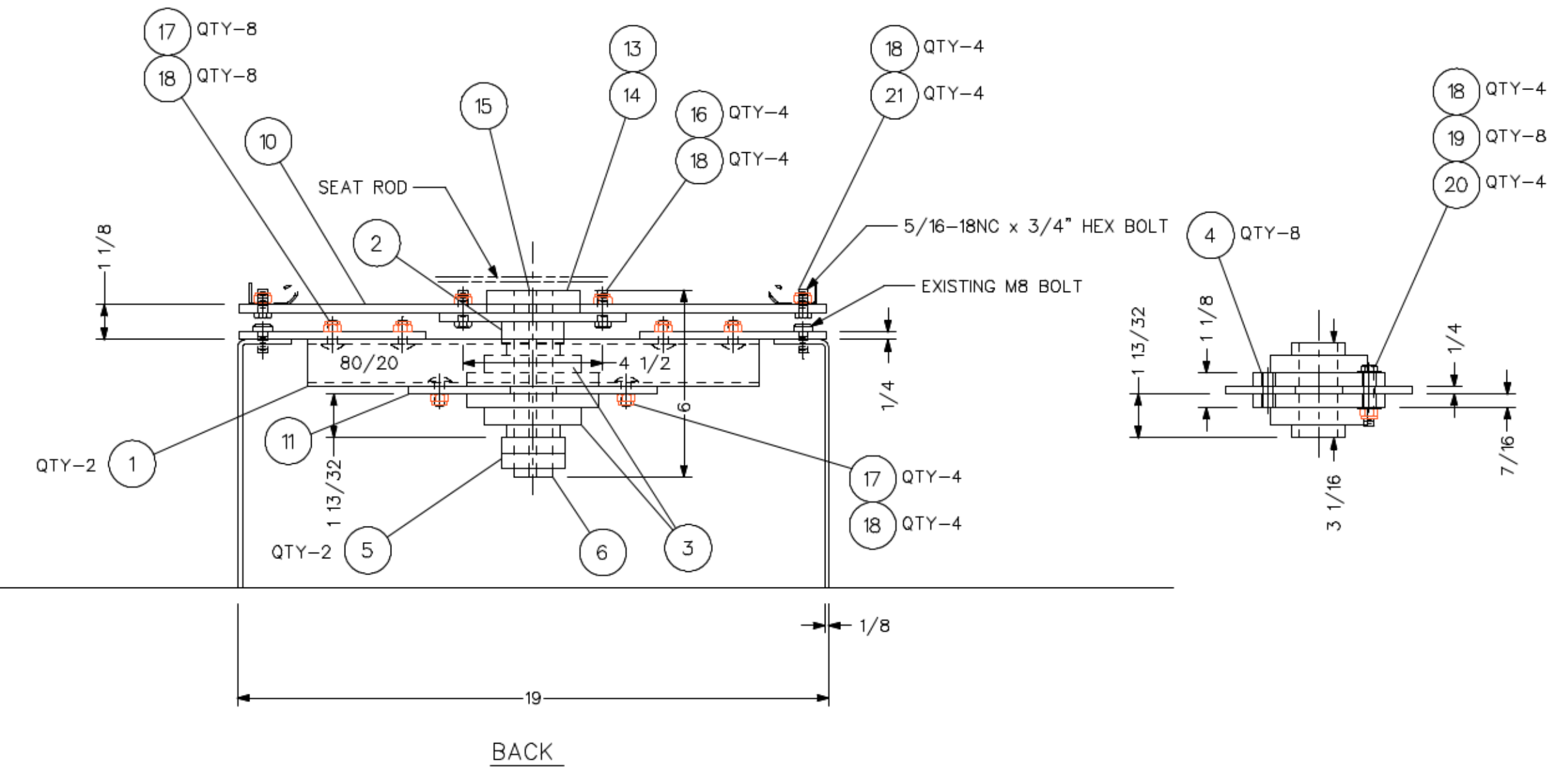
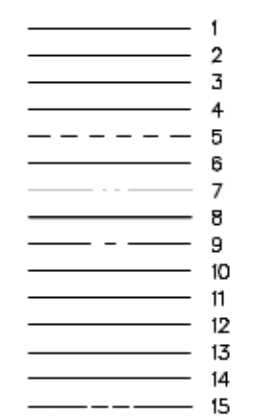


BOTTOM FRAME ONLY SHOWN

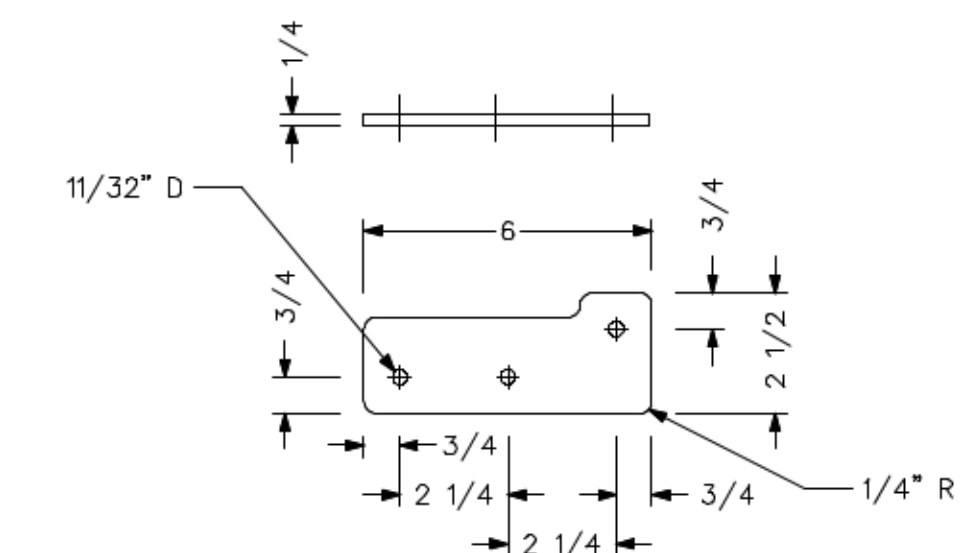


LEFT SIDE

ITEM	PART NAME	QTY	DESCRIPTION
1	80/20 1 1/2" EXTRUSION - 14 1/2" LG	2	PART # 1515-LS
2	1 1/4" SET SCREW SHAFT COLLAR	1	AMERICAN # ASP-125-SS OR EQUAL 11/16" THICK
3	1 1/4" S FOUR BOLT FLANGE BEARING	2	HUB CITY FB250 SET SCREW OR EQUAL 1 13/32" THICK
4	BEARING BOLT HOLE BUSHING	8	7/16" OD x 5/16" ID x .350" LONG PCC # C38447
5	1 1/4" DOUBLE SPLIT SHAFT COLLAR	2	AMERICAN # ASP-125-2-SS OR EQUAL 1/2" THICK
6	1 1/4" SHAFT	1	6" LONG 1/4" KEYWAY MCMASTER-CARR # 739BK63 (SEE NOTE # 6)
7	WOOD ANTI ROTATION STICK	1	ODJ127-60-4
8	WOOD STOP BLOCK	1	ODJ127-60-5
9	END PLATE	4	ODJ127-60-1
10	SEAT PLATE	1	ODJ127-60-2
11	BEARING PLATE	1	ODJ127-60-3
12	ANTI ROTATION PLATE	1	ODJ127-60-6
13	36 TOOTH 40 CHAIN TL SPROCKET	1	MARTIN # 40BTB36 OR EQUAL MUST HAVE 3" DIA. HUB
14	TAPER-LOCK BUSHING	1	1610-1 1/4"
15	KEY	1	1/4" x 1" LONG

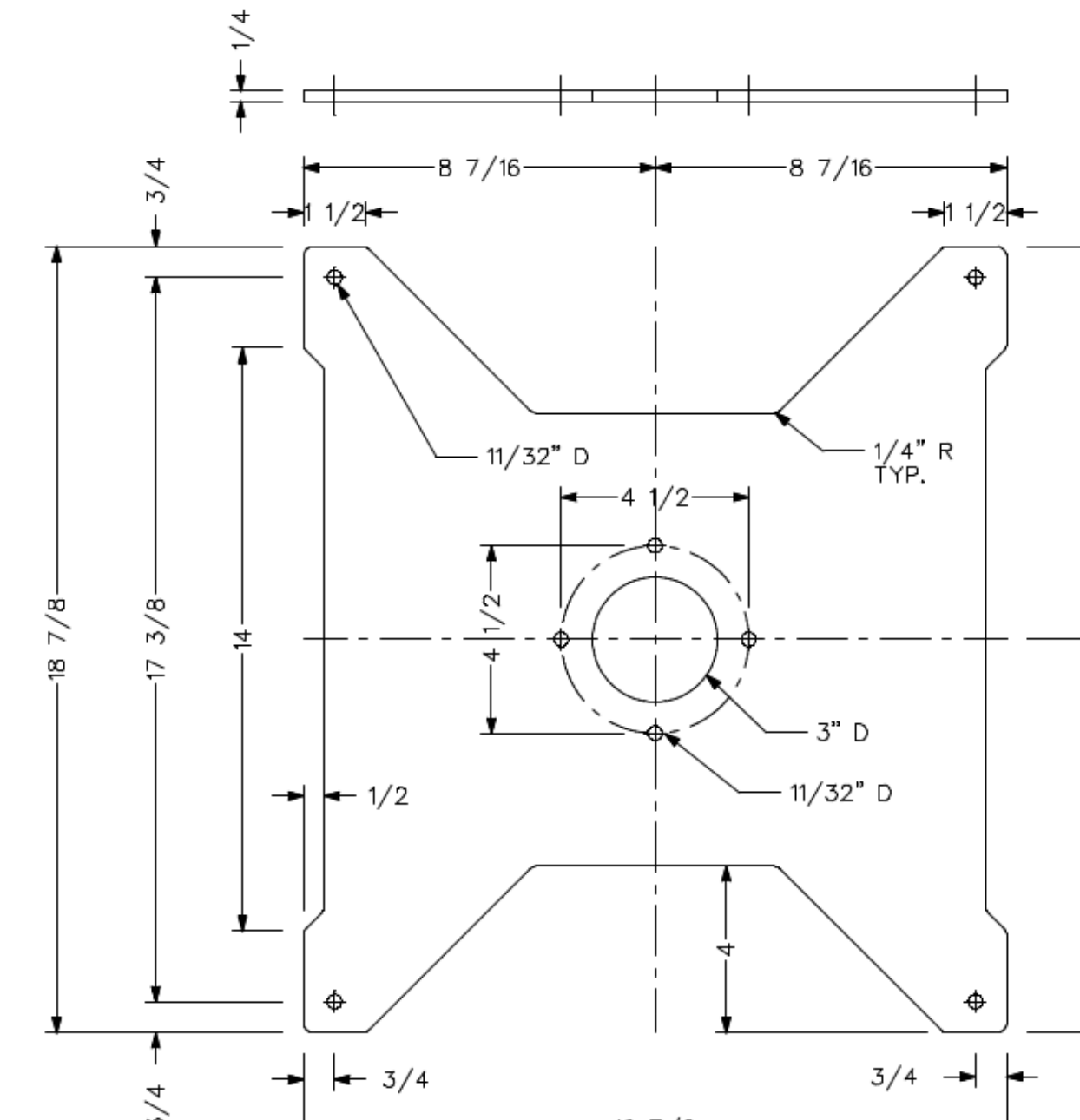


BACK
 ANTI ROTATION STOP NOT SHOWN



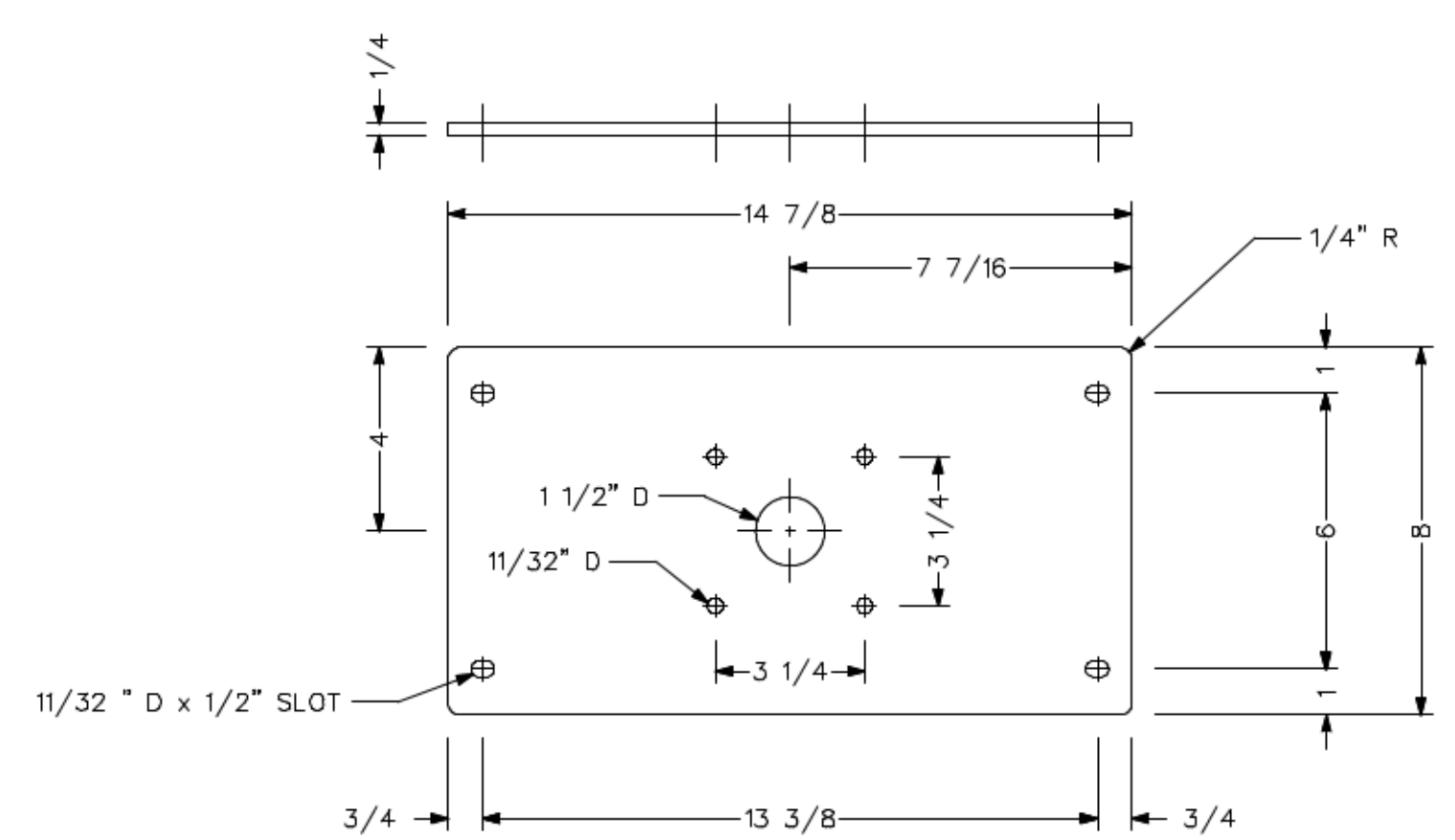
END PLATE

PART # ODJ127-60-1
 QTY - 4
 MAT - 1/4" SS



SEAT PLATE

PART # ODJ127-60-2
 QTY - 1
 MAT - 1/4" SS



BEARING PLATE

PART # ODJ127-60-3
 QTY - 1
 MAT - 1/4" SS

- NOTES:
- NOT DESIGNED FOR POWER SEATS
 - NO REAR AIR SO UNDER SEAT IS EMPTY
 - UNDER SEAT JACK MUST BE RELOCATED AND MOUNT REMOVED
 - APPROXIMATE WEIGHT IS 40 LBS.
 - CONFIRM 1 13/32" BEARING THICKNESS. CHEAP CHINA BEARINGS WERE THICKER.
 - CHANGE 1 1/4" SHAFT LENGTH FROM 6" TO 9" IF BEARINGS ARE TOO THICK. MCMASTER-CARR 9" SS SHAFT IS PART # 739BK64
 - I MADE PARTS FROM 1/4" SS. THEY COULD BE PAINTED MS

ORTON DESIGN Phone: 707.874.9003
 P.O. Box 480 Occidental CA 95465 email: ortondesign4@gmail.com

ORTON	147.6" WB FORD TRANSIT PASSENGER SEAT SWIVEL ASSEMBLY
7-4-16	
3" = 1'	

REVISED 8-1-16 ODJ127-60A