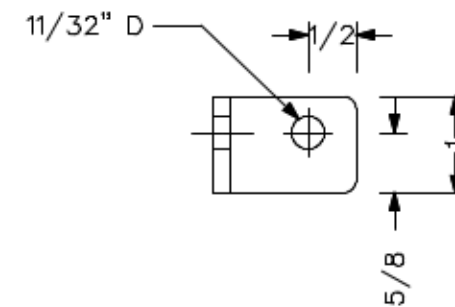
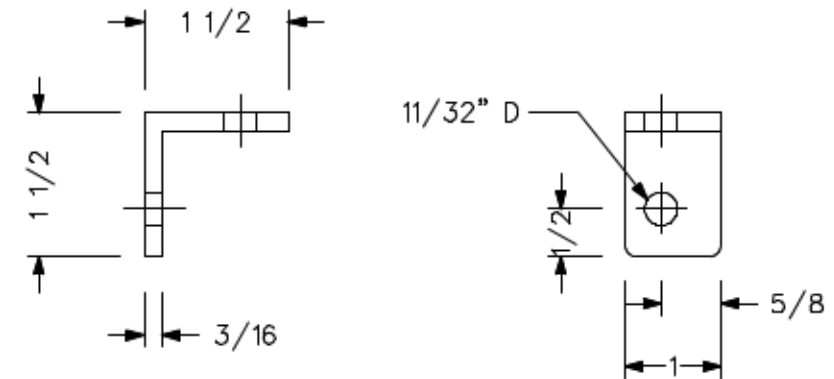


ASSEMBLY



NOTES:

1. HOLES NOT CENTERED TO ALLOW NUT TO CLEAR OTHER CARRIAGE BOLT
2. USED WITH INSET 1/4" PANEL AND IN FLOOR TO CLEAR 3/8" RUBBER
3. ELASTIC STOP NUT USED DUE TO VEHICLE VIBRATIONS

*ORTON DESIGN*

CONNECTOR "B" – SHORT 90 DEGREE ANGLE

HALF

MATERIAL – 3/16 x 1 1/2" ALUMINUM ANGLE

ODJ127-40